



SPECIAL POINTS OF INTEREST:

- LSSCP opens early
- Mini-Minutes from meeting
- Photos, Photos, Photos
- Councilor's report

INSIDE THIS ISSUE:

LSSCP Certification	2
Councilor's Report	3
LSSIRT Mini-Minutes	4
Empowerment Highlights	5
Conference Photos	6-8
LSSIRT Info	9
LSSIRT Listserve	9

## From MIG To LSSIRT: A Support Staff Odyssey

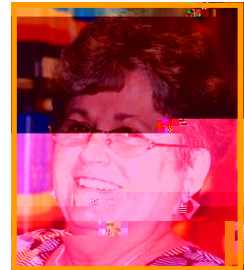
By AnnaMarie Kehnast  
(Excerpted from the original article published in Library Mosaics, July/August 2003)

It all started to roll in January 1988. ALA Council adopted "Guidelines for Quality in Continuing Education for Information, Library and Media Personnel" presented by SCOPE, the Standing Committee on Library Education. These guidelines were later presented in an Annual Conference program in New Orleans. Dr. Jane Robbins, SCOPE chairperson, would later ask the audience "Anyone interested in pursuing issues of support staff, please, sign-up at the end of

the program." The response of eager support staff in the audience was impressive. Had support staff finally found an opportunity to be recognized and to be heard on issues that they face every day on the job?

With every Midwinter and Annual ALA Conference, more library personnel joined the bandwagon. One might wonder "Why was the timing so right?" One major factor at that time was that many states were developing associations for support staff and these state associations started to communicate with each other. Secondly, the Internet came along. We no longer had to worry about overspending the telephone budget.

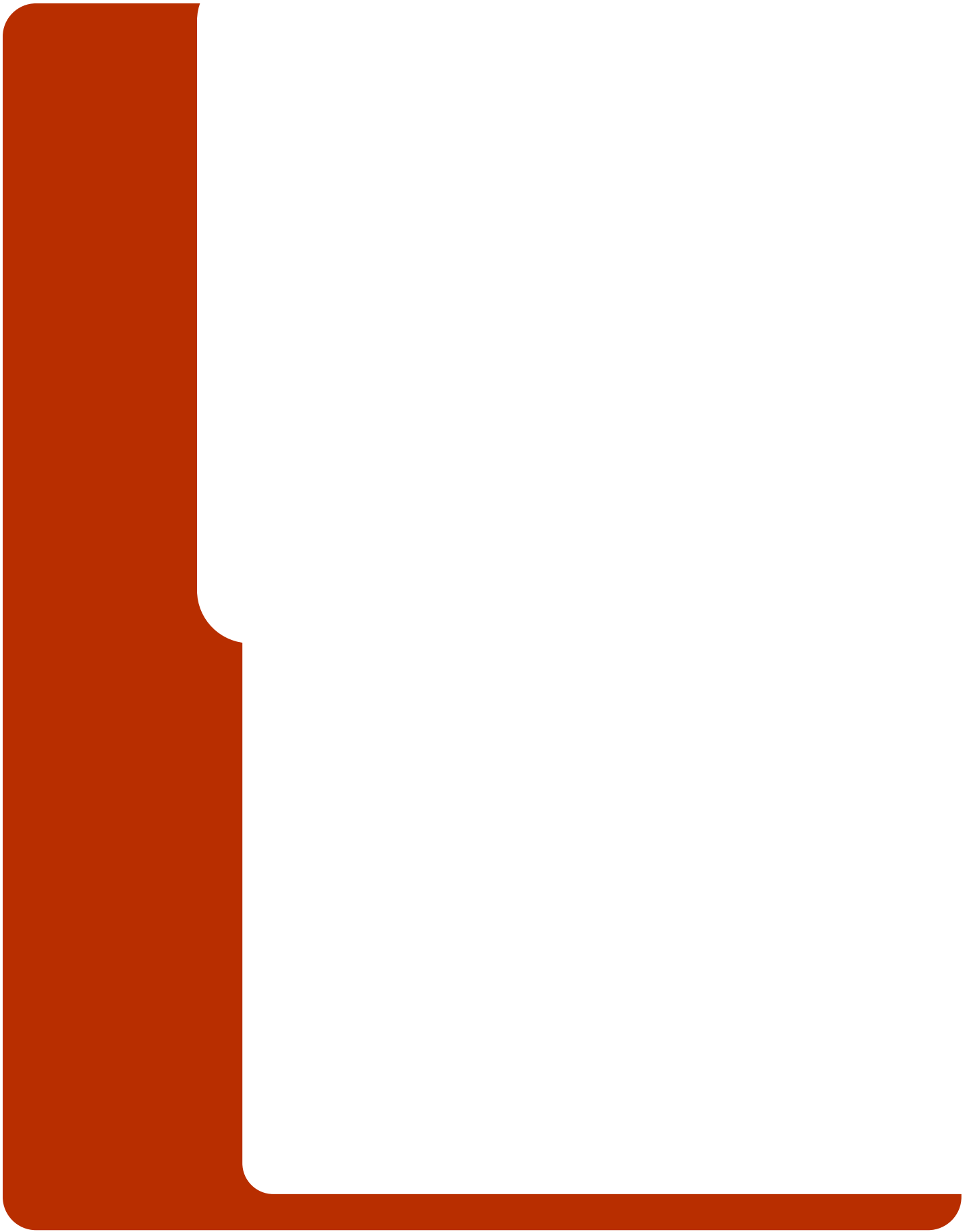
On January 6, 1990, in the basement of the



LSSIRT President  
AnnaMarie Kehnast

Hilton Hotel in Chicago, our group developed a mission statement. We hit the bricks, convention floor and social events with petitions searching for 125 signatures of ALA members, agreeing that a Membership Initiative Group was needed within ALA. Our group had collected the entire number of signatures we needed in only one evening!

Debbie Wolcott (Virginia Beach Public Libraries, Virginia) and I (Gloucester County College, New Jersey) co-chaired the MIG, while Meralyn Meadows (Stanly County Public Library, North Carolina) was







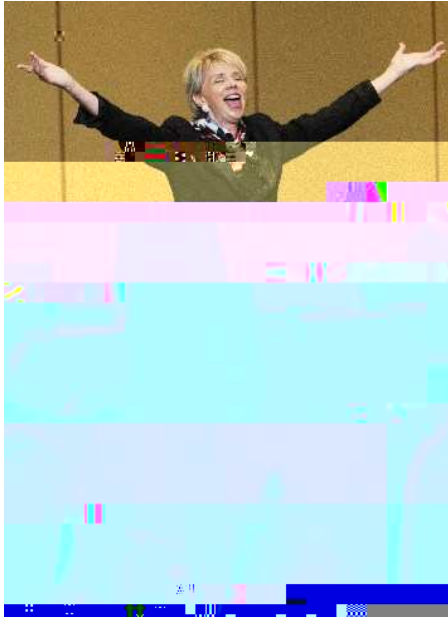
#

\$ % %

**Who's Da Boss:  
Leadership for Library  
Support Staff  
ALA Empowerment  
Conference,  
Chicago, July 11-12,  
2009**

&' '(

%



**Jenny Riddle as Hilary Clinton during the “Lunch with Famous First Ladies” the Empowerment’s closing session.\*\***



**Keynote speaker Al Gini, Empowerment Conference Chair Tobi Oberman, and Kim Sanders, Events Manager, ALA Empowerment Conference.\*\***



**Jenny Riddle as Mary Todd Lincoln\*\***



**Maureen Sullivan (Maureen Sullivan Associates) speaks to a full audience on the topic: “Leading From Any Position: Opportunities to Contribute to Your Library’s Success”**

**Gail Johnson and Pam Parr of Face to Face Communications spoke to a standing room only crowd on: “Management: When Bad Things Happen to Good People”**



**\*\*Photo Credit to Oscar Einzig Photography, Chicago\*\***







